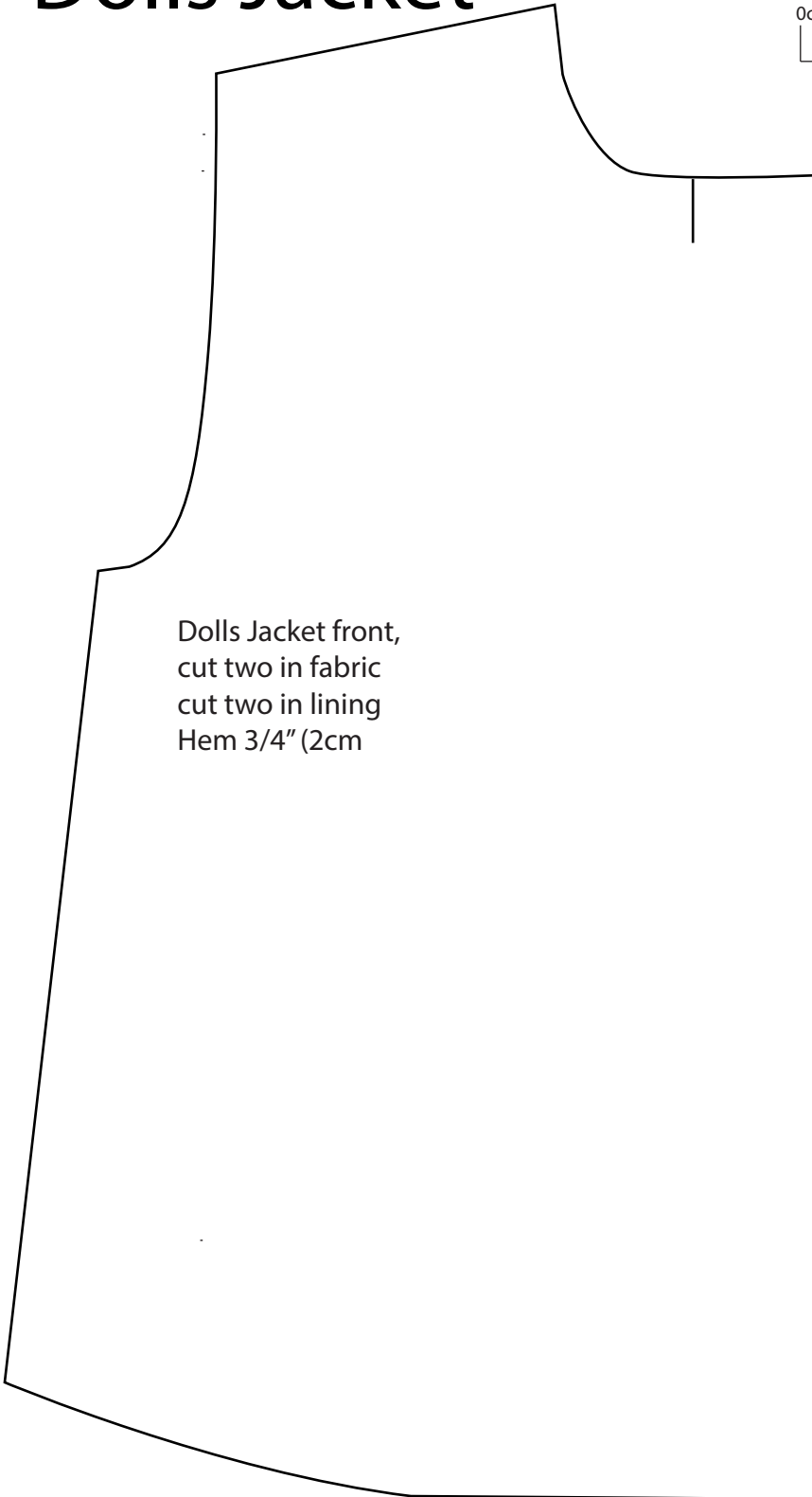
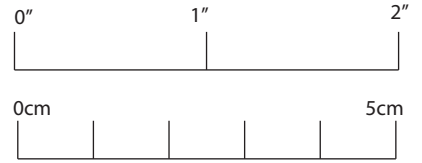


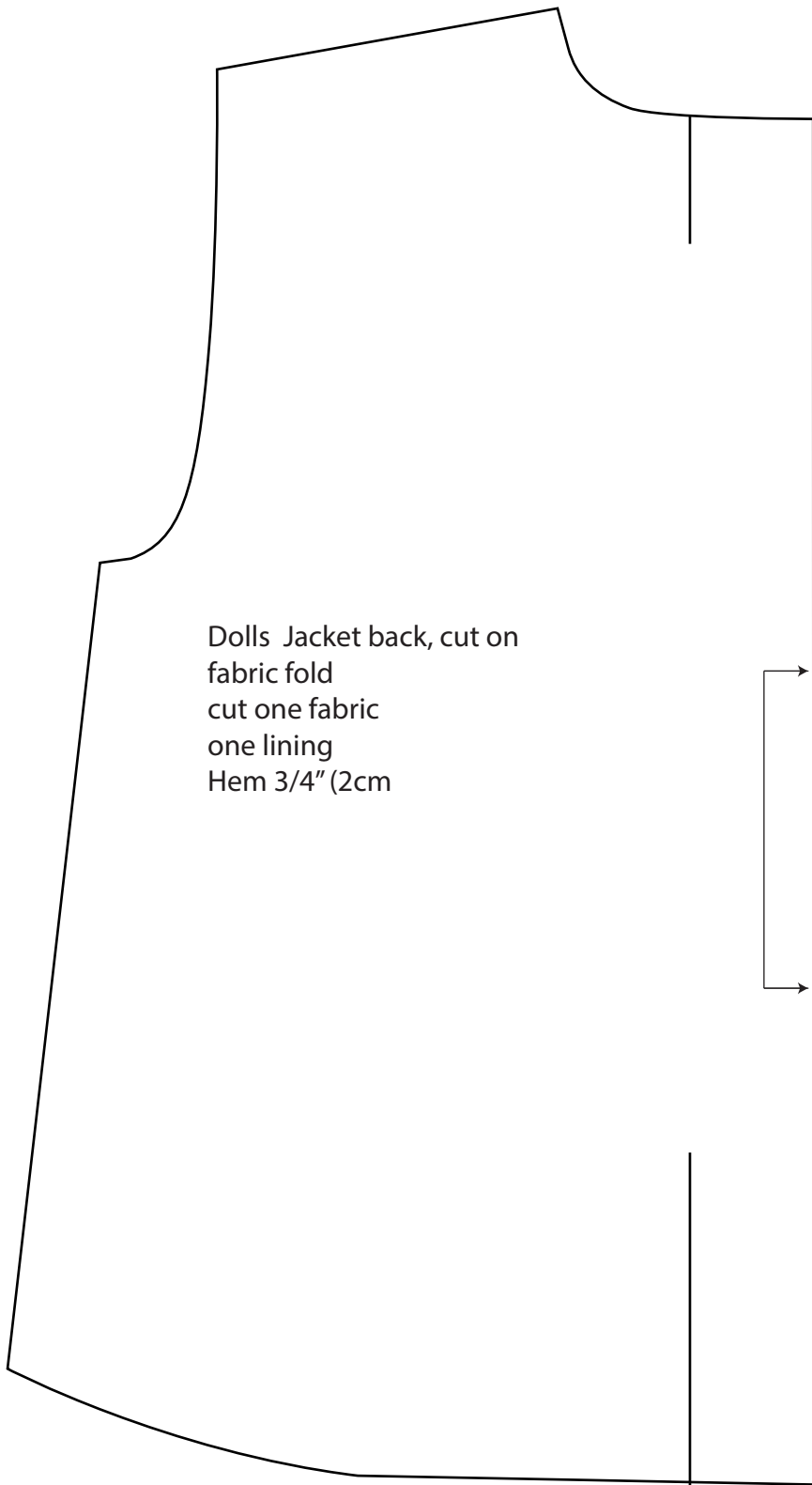
Dolls Jacket



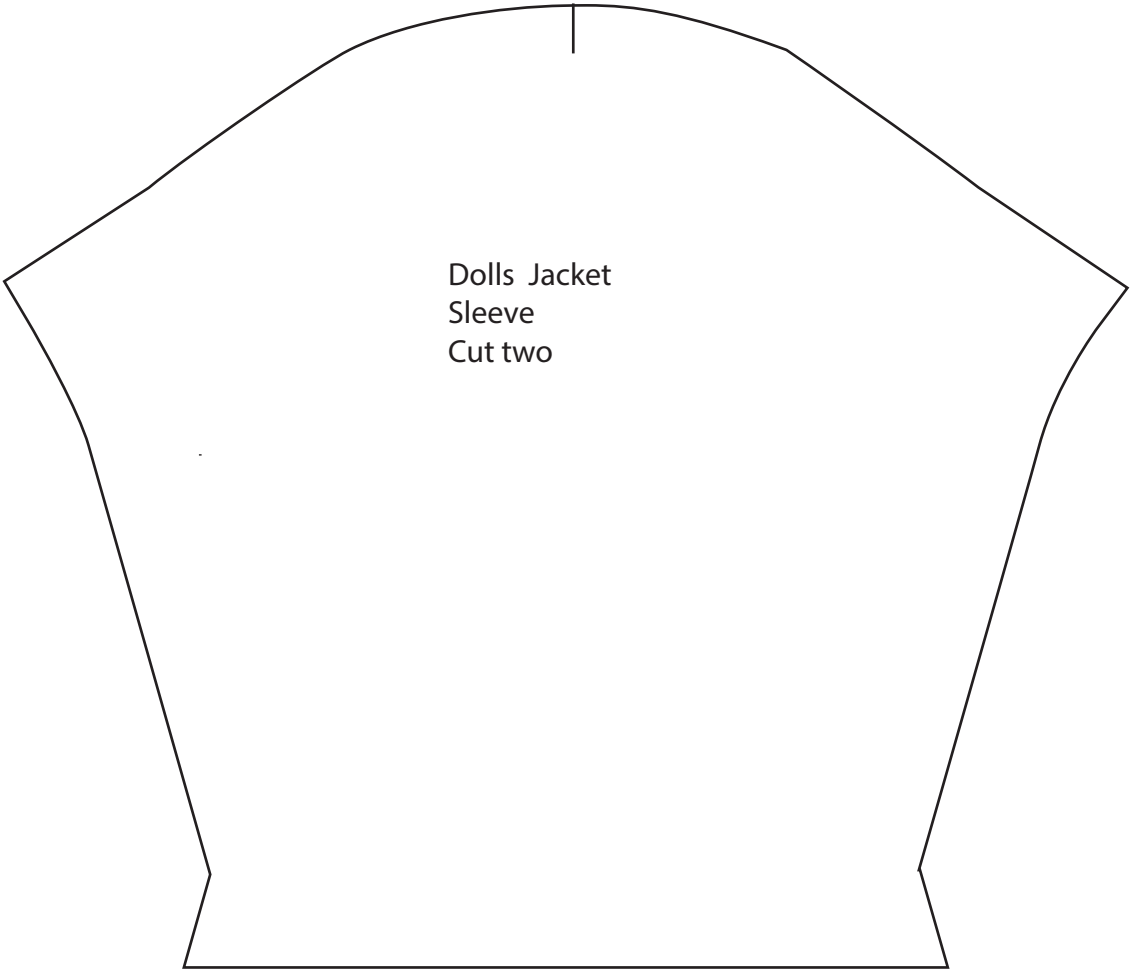
Dolls Jacket front,
cut two in fabric
cut two in lining
Hem 3/4" (2cm)

This pattern is
specially made for
the ragdoll collection

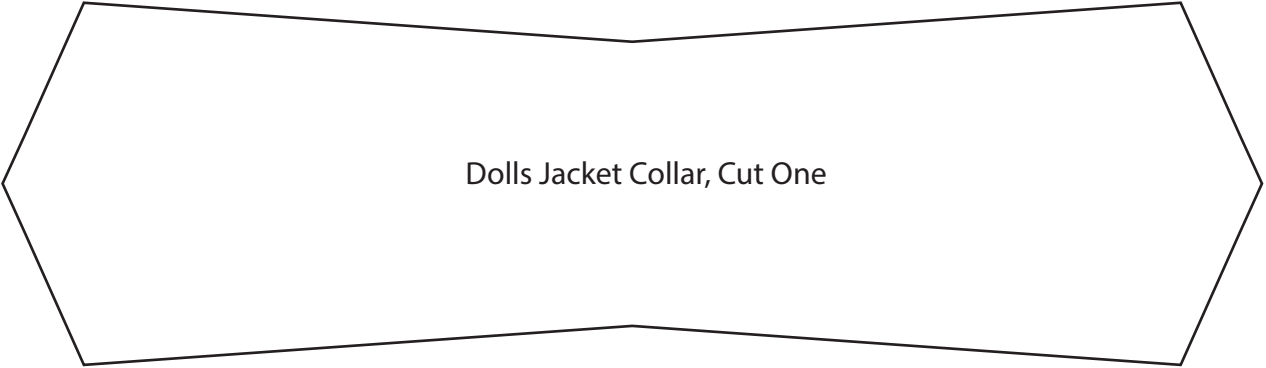
1/4" (6mm) seam allowance
is included unless otherwise
stated in the instruction.



Dolls Jacket back, cut on
fabric fold
cut one fabric
one lining
Hem 3/4" (2cm)



Dolls Jacket
Sleeve
Cut two



Dolls Jacket Collar, Cut One